

Town of Webster

New Hampshire

Map 3: Soils (Forest and Farm Resources)

Notes on Soil Data

Forest and Farmland soil classifications are defined in the document "New Hampshire Soil Attribute Data Dictionary" prepared by the Natural Resource Conservation Service. All prime farmland, farmland of statewide importance and farmland of local importance are also considered important forest soils (Classes IA, IB or IC). As such, only important forest soils that are not also important farmland soils are shown on this map.

Farmland Soils

Prime farmland soils are defined by a range of characteristics that make it the best soil for the production of food, feed, fiber and oilseed crops. Farmland of statewide importance is not prime or unique but is considered important for the production of food, feed, fiber and oilseed crops. Farmland of local importance has local significance for the production of food, feed, fiber and forage. Criteria for this definition is determined on a county-wide basis.

Forest Soils

Forest Soil Group IA is defined as shade tolerant hardwood, such as beech and sugar maple. Forest Soil Group IB is defined as tolerant hardwood such as beech, but slightly less fertile than Group IA. Forest Soil Group IC is defined as shade tolerant softwood, such as white pine, red spruce and hemlock.

Legend

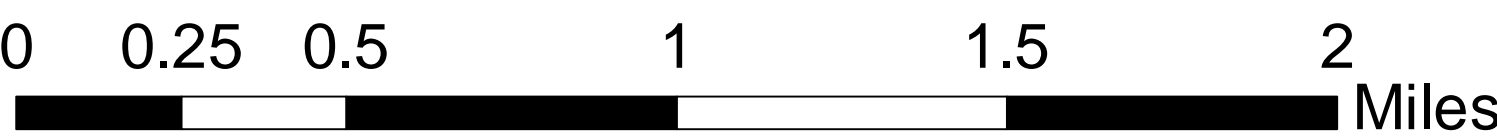
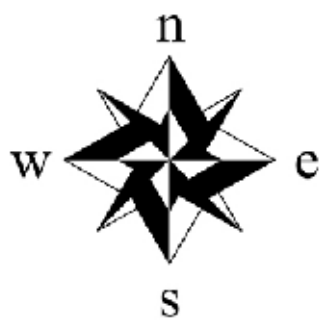
- Webster
- Half Mile Buffer
- Roads
- Tax Parcels (2010)
- 50' Contour Lines
- Conservation Land
- Open Water

Farmland Soils Group

- All areas are prime farmland
- Farmland of statewide importance
- Farmland of local importance

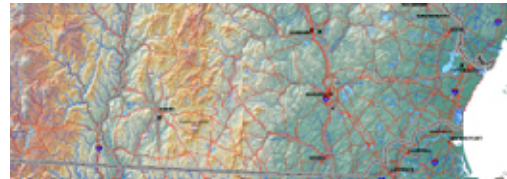
Forest Soils Group

- Group IA
- Group IB
- Group IC



Prepared by:
NH Audubon GIS Specialist, V. Jones
603-224-9909, vjones@nhaudubon.org
December, 2011

Digital data in NH GRANIT represent the efforts of the contributing agencies to record information from the cited source materials. Complex Systems Research Center (CSRC), under contract to the Office of Energy and Planning (OEP), and in consultation with cooperating agencies, maintains a continuing program to identify and correct errors in these data. OEP, CSRC, and the cooperating agencies make no claim as to the validity or reliability or to any implied uses of these data.



NH GRANIT
NEW HAMPSHIRE'S STATEWIDE GIS CLEARINGHOUSE

